

International Relations Dimension

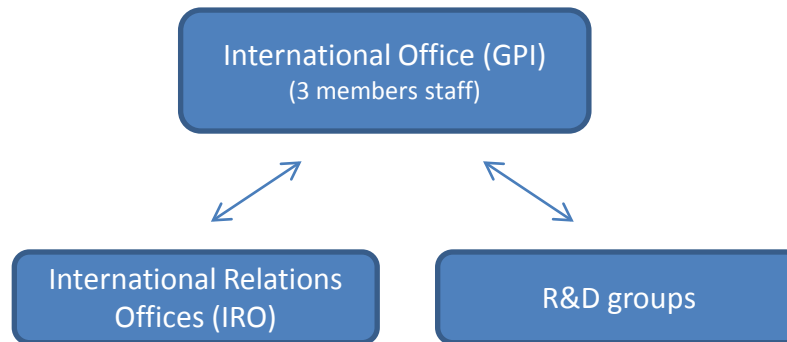
INTERNATIONAL RELATIONS

1. International Relations in IPP

1.1 Organizational structure of internationalisation

- IPP began the implementation of its internationalisation policy in 1989
- The ERASMUS program was the founder of the internationalisation policy of IPP, providing the framework and the *modus operandi*

Organizational structure

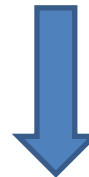


1. International Relations in IPP

1.1 Organizational structure of internationalisation

GPI

coordinates and aids all international IPP actions concerning relations and cooperation, supporting international collaboration projects between IPP and other higher education institutions, regarding community education, research and development programmes.



Develop, promote, implement and monitors the IPP internationalisation policy

1. International Relations in IPP

1.1 Organizational structure of internationalisation

- IPP cooperation activities involve over 35 countries from Europe, America, Africa and Asia, over 360 cooperation agreements and the participation in several programmes both as coordinator and partner:

- a) Lifelong Learning programme (LLL)

- ✓ Erasmus student exchanges (study and internship abroad)
- ✓ Erasmus Consortium (internship abroad)
- ✓ Erasmus teacher exchanges
- ✓ Erasmus international courses
 - Intensive programs
 - Erasmus Intensive Language Courses
- ✓ Erasmus multilateral projects
- ✓ Comenius projects for teacher training
- ✓ Leonardo da Vinci-projects

- b) ALFA projects

- c) Asia ITC

- d) Tempus projects in Bosnia, Serbia, Albania & Montenegro, Ukraine

1. International Relations in IPP

1.2 Internationalisation policy

Given the peripheral **geographical location** of Portugal, **Erasmus mobility projects, the Erasmus Consortium and Leonardo da Vinci** projects take up a **leading role** in the **promotion of social cohesion, active citizenship, intercultural dialogue and personal fulfilment**, encouraging mobility of students and graduates within a European Lifelong Learning, an auspicious context **based on transparency and recognition** of qualifications of the participants.

All projects embraced by the Porto Polytechnic follow on the **strategy outlined** in relation to the **development of skills and qualifications** of **our students and graduates** through contact with new HEI, new technologies and new contexts of work, **enhancing their academic and professional improvement**, which would give them a higher level of employability and competitiveness in the European labor market.

We believe in projecting the best of our culture beyond borders through the different contributors in the internationalisation of IPP who are the students, teaching staff and non-teaching staff. **We believe in sharing knowledge and experiences** with different institutions and international organisations and **recognize the importance of this experience in the development** of both **individuals** and the **institution**.

1. International Relations in IPP

1.3 Exchanges Programs

Outgoing

To encouraged students and graduates to participate in the European exchange programs

- Information sessions (by the GPI) supplemented with information and supported by the local coordinator for internationalisation (IRO)

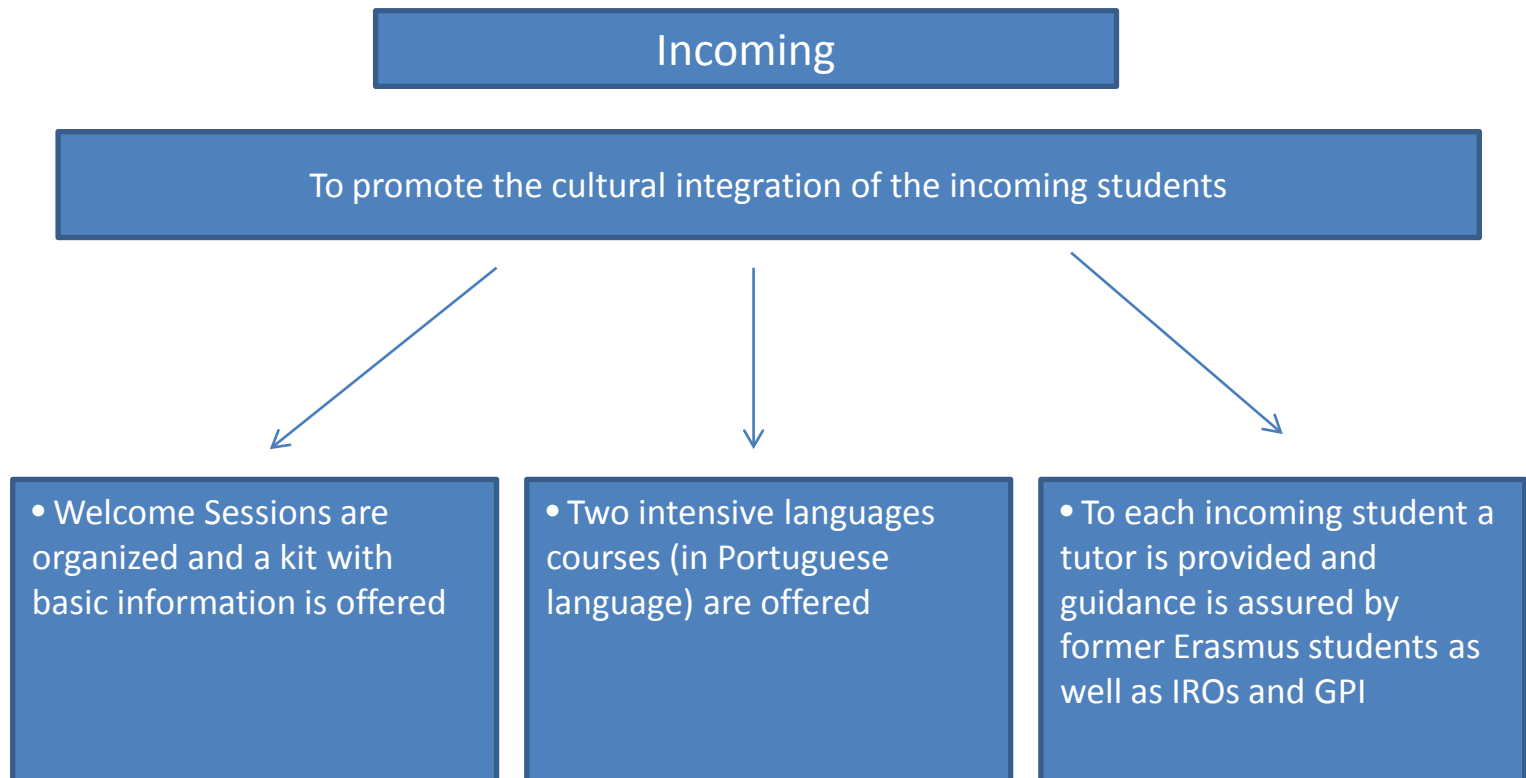
- International day is organized by GPI open to all community

- International weeks are organized in each school by IRO with incoming and outgoing students and graduates

- Intensive languages courses are organized
- Financial support is given to the more needed students

1. International Relations in IPP

1.3 Exchanges Programs



1. International Relations in IPP

1.3 Exchanges Programs

OUTGOING MOBILITY

- Exchange have a duration 3 - 12 months;
- Candidates are selected in compliance whit the programs criteria;
- Individual counseling are provided to students both at School and the Central Services, in order to better clarify the mobility objectives and necessary steps;
- The study program is prepared and approved by the Course Director before the student's departure, alongside with the Equivalence Plan;
- The information on curricula is available both in Portuguese and English;
- For all student exchanges: student application form, learning agreement and transcript of records;
- The ECTS credit system is implemented in all degree courses;
- Recognition is done through the practical application of the ECTS system.

1. International Relations in IPP

1.3 Exchanges Programs

STUDENTS PLACEMENTS MOBILITY

- Exchange have a duration 3 - 12 months;
- Process is carried out by the Departments and the Course Director, and facilitated by the International Offices;
- Placement is planned and validated by the Scientific and Pedagogic Councils;
- The information and guidance is provided by the International Offices, and monitored by School tutors assigned by the Course Directors;
- Work-program and Placement Agreement are previously prepared and agreed. The company presents a work-program proposal according to its needs; it is then analyzed by the School Tutor and the Trainee in order to adjust it to the student needs and then is validated by the Course Director and the Scientific Council;
- The evaluation is based on intermediate and final reports and also through a final certificate of the host organisation;
- Placements are recognised by the IPP and by the host institution and are granted full recognition within the curriculum. Extra-curricular placements are included in the Diploma Supplement.

1. International Relations in IPP

1.4 Exchanges Data

- Outgoing activities (2011/2012):
 - 255 Erasmus students divided in Erasmus study programs, Erasmus placement programs included consortium and intensive programs;
 - 72 staff members in Erasmus programs.

Erasmus Programs	Students	Staff
Student Mobility for Studies (SMS)	178	--
Student Mobility for Placements (SMP)	17	--
Staff Teaching Assignments (STA)	--	46
Staff Training Mobility (STT)	--	26
Erasmus Consortium	10	--
Intensive Programs (IP)	50	--

1. International Relations in IPP

1.4 Exchanges Data

- Incoming activities (2011/2012):
 - a total of 384 students for a period of 3 or more months;
 - a total of 128 staff.

Erasmus Programs	Students	Staff
SMS	332	--
SMP	52	--
STA	--	112
STT	--	36

1. International Relations in IPP

1.4 Exchanges Data

Country	Mobility Type	
	SMP	SMS
Austria	--	5
Belgium	2	33
Bulgaria	--	3
Croatia	1	1
Czech Republic	4	15
Estonia	--	9
Finland	--	6
France	--	8
Germany	--	4
Greece	2	9
Hungary	--	13
Ireland	--	1
Italy	--	7

Country	Mobility Type	
	S M P	SMS
Lithuania	3	13
Latvia	--	1
Netherlands	2	3
Norway	--	1
Poland	6	49
Romania	29	18
Russia	---	7
Slovakia	--	1
Slovenia	3	7
Spain	--	72
Switzerland	--	4
Turkey	--	39
United Kingdom	--	3

Thank you